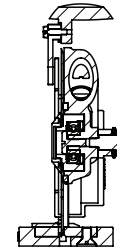
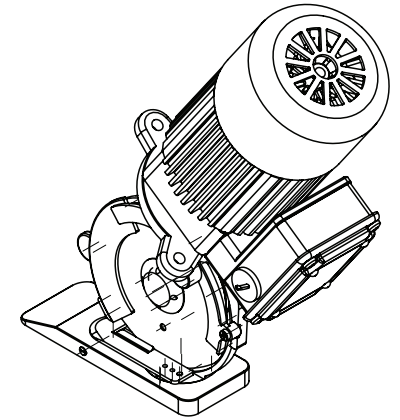
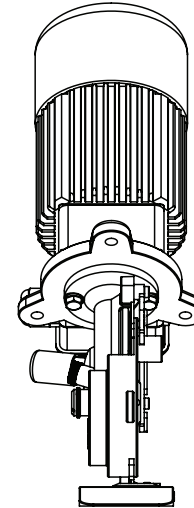
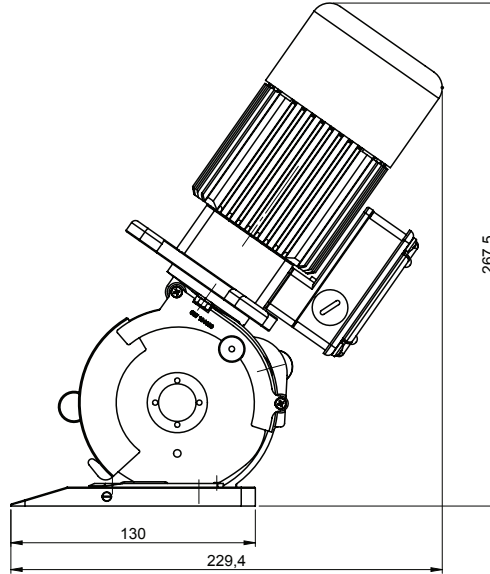
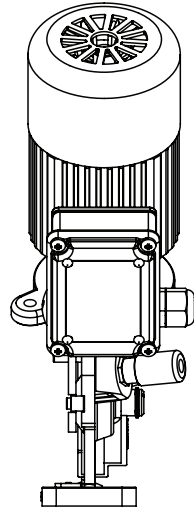
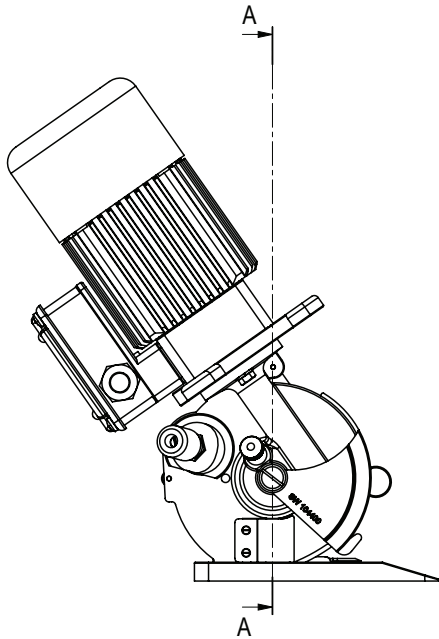
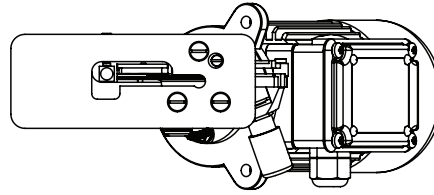


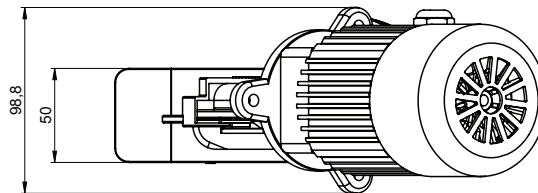


DIMENSION LAYOUT

mod. GRT10



SEZIONE A-A



Tolleranze generali per quote di lavorazione								Rugosità Ra UNI 3963		
Fino a:	>6	>30	>120	>315	>1000	>2000	>4000			
5	30	120	315	1000	2000	4000		$\frac{3.2}{\sqrt{Rz}}$	$\frac{0.8}{\sqrt{Rq}}$	
± 0.1	± 0.2	± 0.3	± 0.5	± 0.8	± 1.2	± 2	± 3	$\frac{6.3}{\sqrt{Rz}}$	$\frac{0.8}{\sqrt{Rq}}$	

Senza apposite indicazioni fare riferimento alla norma UNI-ISO 2768 - m. Tutti gli spigoli s'intendono sbavati con smusso o arrotondamento di 0,5 mm

REVISIONE	04	-			
	03	-			
	02	-			
	01	-			
SCALA	1:2	TRATTAMENTO SUPERFICIALE	MODELLO	N° PEZZI	
DATA	02/11/2011	TRATTAMENTO TERMICO	-	-	
DISEGNATO	TCR	MACCHINA	GRT10	MATERIALE	PESO KG
		SCHEMA DI INGOMBRO		-	1.29
VERIFICATO	RSR	DESCRIZIONE	ASSIEME GENERALE	CODICE	S/N
				GRT10	00
				N° DISEGNO	S/N
				A-GRT 10 D.0001	00